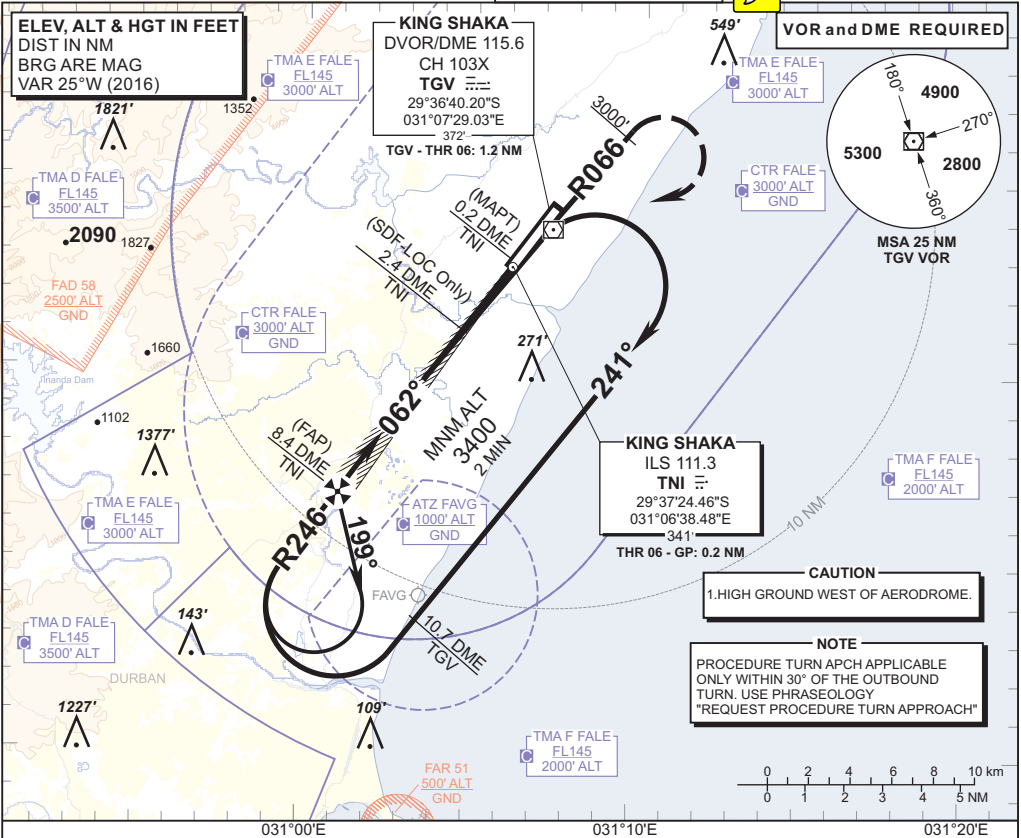


INSTRUMENT APPROACH CHART

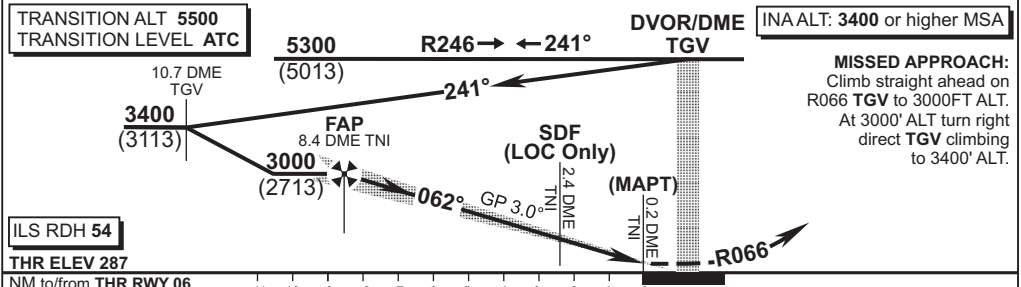
AERODROME ELEV 304'
 HEIGHTS RELATED TO
 THR RWY 06 - ELEV 287'

RADAR APP 125.75
 TWR 118.45
 GND 121.65
 ATIS 127.00

DURBAN
 (KING SHAKA INTERNATIONAL)
ILS Y RWY 06 CAT II
 CAT A - D



TNI ILS/DME	8.4	8	7	6	5	4	3	2.4	2	1
ADVISORY ALT (HGT)	3000 (2713)	2880 (2593)	2550 (2263)	2230 (1943)	1910 (1623)	1580 (1293)	1260 (973)	1060 (773)	930 (643)	610 (323)



OCA (H)		A	B	C	D/DL	GS	KT	80	100	120	140	160	
Straight-in Approach	With 2.5% Missed APCH Gradient	CAT I	946 (659)	946 (659)	946 (659)	952 (665)	FAP to THR	M:S	6:10	4:56	4:07	3:31	3:05
		CAT II	832 (545)	846 (559)	854 (567)	875 (588)	Rate of descent	FPM	431	539	647	755	863
		GP INOP	1180 (893)	1180 (893)	1180 (893)	1180 (893)	NOTE: 1. Descend in the hold to 3400' ALT. 2. 80°/260° Procedure turn prohibited. 3. Circle to land at the discretion of the pilot in command.						
		With 3.0% Missed APCH Gradient	CAT I	487 (200)	487 (200)	487 (200)							497 (210)
		CAT II	387 (100)	401 (114)	409 (122)	430 (143)							
	GP INOP	730 (443)	730 (443)	730 (443)	730 (443)								
Circling: AD ELEV		1000 (696)	1000 (696)	1270 (966)	1350 (1046)								

CHANGE: OCA(H) Advisory ALT Table/VAR